



COURSE INFORMATION 2017

CHC50113

DIPLOMA OF EARLY CHILDHOOD EDUCATION AND CARE

Be in demand, and be a match for employer expectation.

This is a highly-valued qualification in this competitive sector. You will use the Diploma to progress to supervisory roles, expand your knowledge and it is also a pathway to a Bachelor of Education. Build on your existing Certificate III foundations with just 15 units more to achieve your Diploma. You get expert advice from our training team, wherever you are on the GC + beyond.

YOU RECEIVE:

- 240 hours of practical, support from our trainers who are industry icons
- there's a study option to suit your lifestyle (in class or external)
- foundation skills help prior & during the course if you are nervous about study
- financial challenges are solved, you may be eligible for funding, or we have payment plans
- pathways to university.

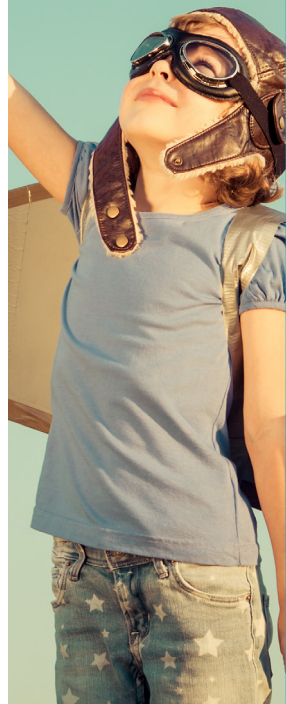
BURLEIGH HEADS COMMENCING 6 FEBRUARY 2017

\$420 (\$15 PER UNIT)* | 31 WEEKS - 2 DAYS A WEEK PLUS PLACEMENT

ELIGIBILITY: 15 years old +, Queensland resident, Australian or NZ citizen or temporary resident with necessary visa on the pathway to permanent residency, Must not be enrolled in or hold a Certificate IV or higher, *Full fee \$4500 for ineligible participants. Students will be required to obtain a Blue Card prior to practical placement.

PLEASE NOTE: By doing this qualification you will no longer be eligible for a government subsidised training place under the Higher Level Skills Program.

This qualification is funded under the VET Investment Plan, a QLD Government Initiative.



\$420* FOR ELIGIBLE PARTICIPANTS

www.acecolleges.edu.au

ENROL TODAY

ACE COMMUNITY COLLEGES LTD RTO 90032

07 5520 3026

burleigh@acecolleges.edu.au

[facebook.com/ACECommunityCollegesGoldCoast](https://www.facebook.com/ACECommunityCollegesGoldCoast)